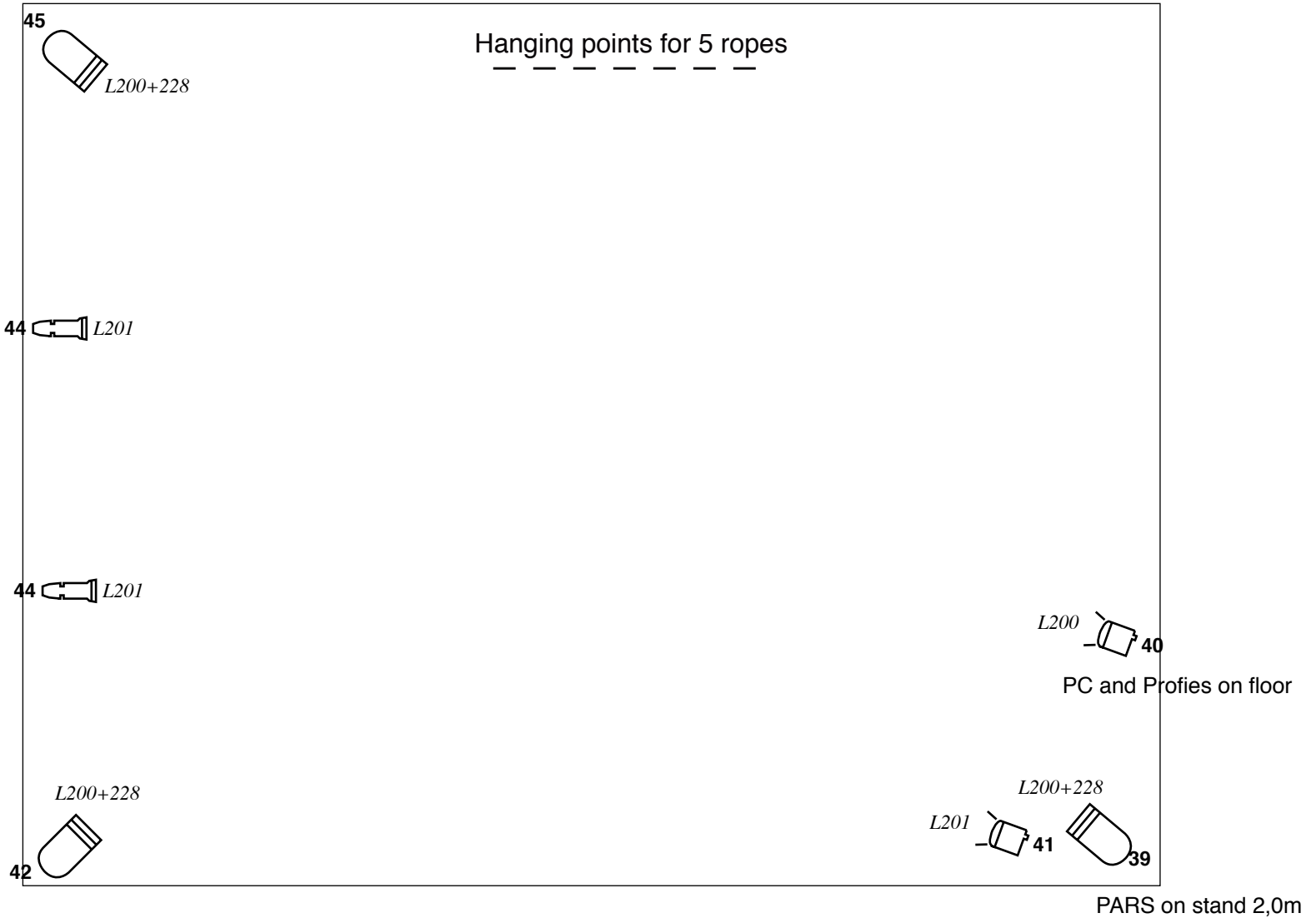
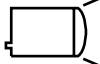
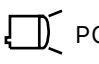

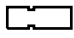
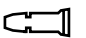



Accademia Teatro Dimitri
Master project Robert Diaz: Belonging to no one

Lighting Plan

spotlights on floor level



<p>Key</p> <p><i>Color</i></p> <p>Channel</p>	 PC 1000W	 PC 650W
	 Flood 500W	 Profile 500W 15-30° with iris
	 Profile 25-50° 500W	
	 PAR 64 cp62	

06/2017 Chr.S.